

learning and

教學



相長

teaching

## Overview of CPCE, HKCC, SPEED and Four Academic Divisions

### 專業及持續教育學院、香港專上學院、專業進修學院和四個學部概覽

Founded in 2002 as a self-financing college of The Hong Kong Polytechnic University (PolyU), the College of Professional and Continuing Education (CPCE) oversees the operations and development of its two educational units – Hong Kong Community College (HKCC) and School of Professional Education and Executive Development (SPEED) as well as four academic divisions – Business and Hospitality Management, Languages and Communication, Science, Engineering and Health Studies, and Social Sciences, Humanities and Design. The four academic divisions focus their scholarly efforts on their respective academic disciplines, not least in providing teaching and learning support for HKCC and SPEED.

With a flexible “2+2” articulation pathway provided by CPCE, HKCC graduates, after completing a 2-year Associate Degree (AD) or Higher Diploma (HD) programme, may articulate to SPEED’s 2-year articulation honours degree programmes leading to PolyU-SPEED awards.

To encourage lifelong learning, SPEED also offers various continuing education programmes/courses, corporate training and consultancy services to enable working adults to add value to their careers.

專業及持續教育學院（CPCE）成立於2002年，是隸屬於香港理工大學（理大）的自資學院，專責統籌和管理轄下兩個教學單位—香港專上學院（HKCC）和專業進修學院（SPEED），以及四個學部—工商及款待業管理學部；語文及傳意學部；科技、工程及健康學部；社會科學、人文及設計學部。四個學部專注所屬學科範疇的學術工作，並致力為 HKCC 及 SPEED 提供教學支援。

CPCE 提供靈活的「2+2」升學途徑，HKCC 學生完成兩年制副學士或高級文憑課程後，可升讀 SPEED 兩年制榮譽學士學位銜接課程，以獲取理大專業進修學院學銜。

為鼓勵終身學習，SPEED 亦提供許多不同的持續進修課程、企業培訓及顧問服務，協助在職人士為事業增值。

In 2020/21, HKCC offered 34 AD and HD programmes, spanning the domains of arts, science, social sciences, business and the specialised areas of design and health studies. SPEED offered 31 full-time and 7 part-time articulation honours degree programmes leading to PolyU-SPEED awards in 10 disciplines, namely Accountancy; Building, Surveying and Property Management; Business; Design; Engineering; Health Studies, Information Technology and Data Science; Hospitality and Tourism Management; Language and Communication; Marketing; Social Sciences and Humanities.

Three new PolyU-SPEED award programmes were launched during the year: BA (Hons) in Bilingual Studies with Translation, BA (Hons) in Chinese Language and Culture, and BA (Hons) in Language and Professional Communication.

In addition, SPEED continued to offer law courses and business programmes in collaboration with the University of London, the United Kingdom and Northumbria University’s Newcastle Business School, the United Kingdom respectively.

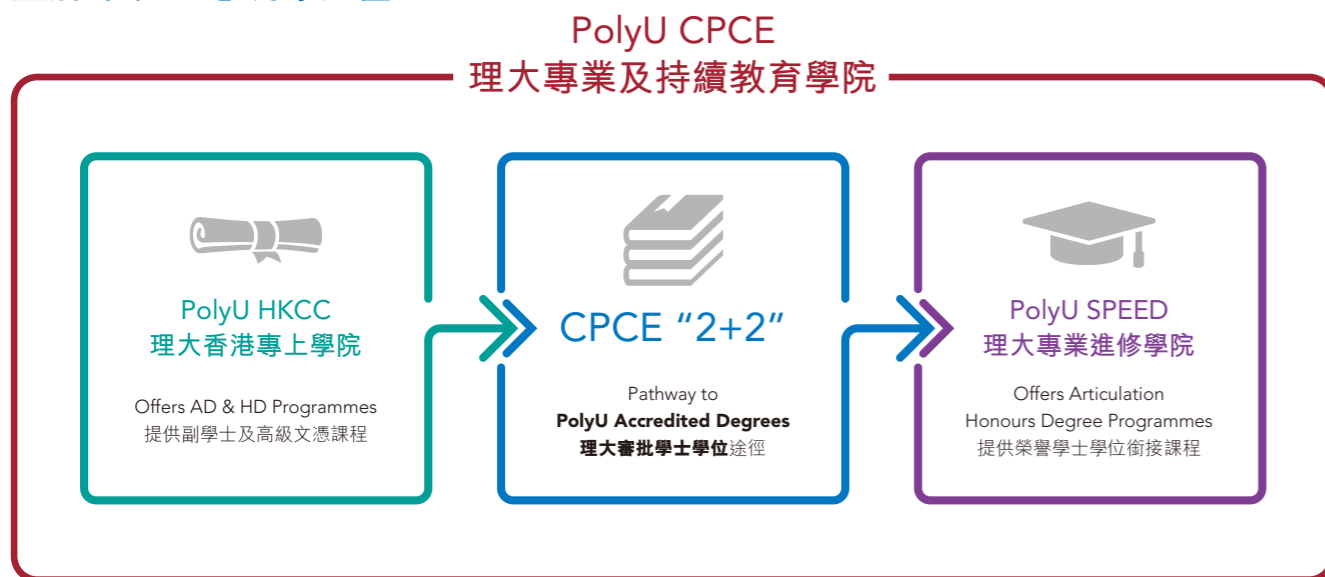
2020/21 學年，HKCC 開辦 34 項副學士及高級文憑課程，涵蓋文、理、社、商範疇，也有設計及健康學專科。SPEED 則開辦 31 項全日制及 7 項兼讀制理大專業進修學院學銜的榮譽學士學位銜接課程，涵蓋十大學科範疇：會計；建築、測量及物業管理；商業；設計；工程；健康學、資訊科技及數據科學；款待業及旅遊業管理；語文及傳意；市場營銷；社會科學及人文學。

年內推出了三項理大專業進修學院學銜新課程：中英雙語學及翻譯（榮譽）文學士、中國語文及文化（榮譽）文學士，以及語文及專業傳意（榮譽）文學士。

此外，SPEED 繼續與英國倫敦大學及英國諾桑比亞大學紐卡素商學院合作，分別開辦法律課程及商業課程。

### Flexible “2+2” Articulation Pathway

#### 靈活的「2+2」升學途徑



# List of Programmes 2020/21

## 2020/21 學年課程一覽

### Associate Degree Programmes Leading to PolyU-HKCC Awards 可獲頒理大香港專上學院學銜的副學士課程

Programme Title 課程	Full-time 全 日 制	Part-time 兼 讀 制
Associate Degree Scheme in Applied Social Sciences 應用社會科學副學士組合課程		
Associate in Applied Social Sciences 應用社會科學副學士	■	
Associate in Applied Social Sciences (Psychology) 應用社會科學副學士（心理學）	■	
Associate in Applied Social Sciences (Social Policy and Administration) 應用社會科學副學士（社會政策及行政）	■	
Associate in Applied Social Sciences (Sociology and Culture) 應用社會科學副學士（社會學及文化）	■	
Associate Degree Scheme in Business 工商業副學士組合課程		
Associate in Business 工商業副學士	■	
Associate in Business (Accounting) 工商業副學士（會計）	■	
Associate in Business (Business Management) 工商業副學士（商業管理）	■	
Associate in Business (Finance) 工商業副學士（金融）	■	
Associate in Business (Hospitality Management) 工商業副學士（酒店管理）	■	
Associate in Business (Human Resources Management) 工商業副學士（人力資源管理）	■	
Associate in Business (International Business) 工商業副學士（國際商業）	■	
Associate in Business (Logistics and Supply Chain Management) 工商業副學士（物流及供應鏈管理）	■	
Associate in Business (Marketing) 工商業副學士（市場學）	■	
Associate in Business (Tourism Management) 工商業副學士（旅遊管理）	■	
Associate Degree Scheme in Design 設計學副學士組合課程		
Associate in Design (Advertising Design) 設計學副學士（廣告設計）	■	
Associate in Design (Environment and Interior Design) 設計學副學士（環境及室內設計）	■	
Associate in Design (Visual Communication) 設計學副學士（視覺傳意）	■	
Associate in Health Studies 健康學副學士	■	

Programme Title 課程	Full-time 全 日 制	Part-time 兼 讀 制
Associate Degree Scheme in Humanities and Communication 人文及傳意副學士組合課程		
Associate in Bilingual Communication 中英語文傳意副學士	■	
Associate in Chinese Language and Literature 中國語言及文學副學士	■	
Associate in English for Professional Communication 專業傳意英語副學士	■	
Associate in Language and Culture 語文及文化副學士	■	
Associate in Public Relations and Communication 公關傳訊副學士	■	
Associate in Translation and Interpretation 翻譯及傳譯副學士	■	
Associate of Arts 文科副學士	■	
Associate Degree Scheme in Science and Technology 科技副學士組合課程		
Associate in Engineering 工程學副學士	■	
Associate in Information Technology 資訊科技副學士	■	
Associate in Statistics and Data Science 統計及數據科學副學士	■	
Associate of Science 理科副學士	■	

### Higher Diploma Programmes Leading to PolyU-HKCC Awards 可獲頒理大香港專上學院學銜的高級文憑課程

Programme Title 課程	Full-time 全 日 制	Part-time 兼 讀 制
Higher Diploma in Aircraft Services Engineering 飛機服務工程高級文憑	■	
Higher Diploma in Mechanical Engineering 機械工程高級文憑	■	
Higher Diploma in Social Work 社會工作高級文憑	■	
Higher Diploma Scheme in Business 工商業高級文憑組合課程		
Higher Diploma in Event Management 會展與項目管理高級文憑	■	
Higher Diploma in Service Management 服務管理高級文憑	■	

- Supported by Division of Business and Hospitality Management  
由工商及款待業管理學部支援
- Supported by Division of Languages and Communication  
由語文及傳意學部支援
- Supported by Division of Science, Engineering and Health Studies  
由科技、工程及健康學部支援
- Supported by Division of Social Sciences, Humanities and Design  
由社會科學、人文及設計學部支援

Articulation Honours Degree Programmes Leading to PolyU-SPEED Awards  
可獲頒理大專業進修學院學銜的榮譽學士學位銜接課程

Programme Title 課程	Full-time 全 日 制	Part-time 兼 讀 制
Bachelor of Arts (Honours) in Applied and Media Arts 應用及媒體藝術（榮譽）文學士	■	■
Bachelor of Arts (Honours) in Bilingual Studies <sup>1</sup> 中英雙語學（榮譽）文學士 <sup>1</sup>	■	
Bachelor of Arts (Honours) Scheme in Business 商業（榮譽）文學士組合課程		
Bachelor of Arts (Honours) in Business 商業（榮譽）文學士	■	■
Bachelor of Arts (Honours) in Business (Finance) 商業（榮譽）文學士（財務）	■	
Bachelor of Arts (Honours) in Business (Health Services Management) 商業（榮譽）文學士（醫務行政管理）	■	
Bachelor of Arts (Honours) in Business (Human Resource Management) 商業（榮譽）文學士（人力資源管理）	■	
Bachelor of Arts (Honours) in Business (International Business) 商業（榮譽）文學士（國際商業）	■	
Bachelor of Arts (Honours) in Business (Operations and Supply Chain Management) 商業（榮譽）文學士（營運及供應鏈管理）	■	
Bachelor of Arts (Honours) Scheme in Hospitality and Tourism Management 款待及旅遊業管理（榮譽）文學士組合課程		
Bachelor of Arts (Honours) in Convention and Event Management 會展管理（榮譽）文學士	■	
Bachelor of Arts (Honours) in Hospitality Management 款待業管理（榮譽）文學士	■	
Bachelor of Arts (Honours) in Travel Industry Management 旅遊服務業管理（榮譽）文學士	■	
Bachelor of Arts (Honours) in Housing Management 房屋管理學（榮譽）文學士	■	
Bachelor of Arts (Honours) Scheme in Language and Communication 語文及傳意（榮譽）文學士組合課程		
Bachelor of Arts (Honours) in Bilingual Studies with Translation 中英雙語學及翻譯（榮譽）文學士	■	
Bachelor of Arts (Honours) in Chinese Language and Culture 中國語文及文化（榮譽）文學士	■	
Bachelor of Arts (Honours) in Language and Professional Communication 語文及專業傳意（榮譽）文學士	■	
Bachelor of Arts (Honours) Scheme in Marketing 市場營銷（榮譽）文學士組合課程		
Bachelor of Arts (Honours) in Marketing and Digital Strategy 市場營銷及數碼策略（榮譽）文學士	■	
Bachelor of Arts (Honours) in Marketing and Public Relations 市場營銷及公共關係（榮譽）文學士	■	■
Bachelor of Arts (Honours) in Marketing Management 市場營銷管理（榮譽）文學士	■	
Bachelor of Arts (Honours) in Retail and Service Management <sup>1</sup> 零售企業及服務管理（榮譽）文學士 <sup>1</sup>	■	

Programme Title 課程	Full-time 全 日 制	Part-time 兼 讀 制
Bachelor of Arts (Honours) in Professional Communication <sup>1</sup> 專業傳意（榮譽）文學士 <sup>1</sup>	■	
Bachelor of Business Administration (Honours) in Accountancy 會計學（榮譽）工商管理學士	■	
Bachelor of Engineering (Honours) in Electrical Engineering 電機工程學（榮譽）工學士	■	■
Bachelor of Engineering (Honours) in Mechanical Engineering 機械工程學（榮譽）工學士	■	■
Bachelor of Science (Honours) Scheme in Applied Sciences 應用科學（榮譽）理學士組合課程		
Bachelor of Science (Honours) in Applied Sciences (Health Studies) 應用科學（榮譽）理學士（健康學）	■	
Bachelor of Science (Honours) in Applied Sciences (Information Systems and Web Technologies) 應用科學（榮譽）理學士（資訊系統及網絡科技）	■	
Bachelor of Science (Honours) in Applied Sciences (Statistics and Data Science) 應用科學（榮譽）理學士（統計及數據科學）	■	
Bachelor of Science (Honours) in Building Engineering and Management 建築工程及管理學（榮譽）理學士	■	■
Bachelor of Science (Honours) in Surveying 地產及建設測量學（榮譽）理學士	■	■
Bachelor of Social Sciences (Honours) Scheme 社會科學（榮譽）學士組合課程		
Bachelor of Social Sciences (Honours) 社會科學（榮譽）學士	■	
Bachelor of Social Sciences (Honours) in Psychology 心理學（榮譽）社會科學學士	■	
Bachelor of Social Sciences (Honours) in Public Administration 公共行政（榮譽）社會科學學士	■	

Diploma Programme Leading to PolyU-SPEED Award  
可獲頒理大專業進修學院學銜的文憑課程

Programme Title 課程	Full-time 全 日 制	Part-time 兼 讀 制
Diploma in Active Ageing <sup>1</sup> 活齡文憑 <sup>1</sup>		■

Remark:  
1. These programmes are being phased out, with no students admitted in the 2020/21 academic year.

備註：  
1. 課程逐步停辦，在 2020/21 學年沒有收錄新生。

- Supported by Division of Business and Hospitality Management 由工商及款待業管理學部支援
- Supported by Division of Languages and Communication 由語文及傳意學部支援
- Supported by Division of Science, Engineering and Health Studies 由科技、工程及健康學部支援
- Supported by Division of Social Sciences, Humanities and Design 由社會科學、人文及設計學部支援

Articulation Honours Degree Programmes Leading to PolyU Awards<sup>2</sup>  
可獲頒理大學銜的榮譽學士學位銜接課程<sup>2</sup>

Programme Title 課程	Part-time 兼讀制
Bachelor of Arts (Honours) in Computing 電子計算（榮譽）文學士	■
Bachelor of Arts (Honours) in English for Business and Professional Communication 工商專業英語傳意（榮譽）文學士	■
Bachelor of Arts (Honours) in Social Work 社會工作（榮譽）文學士	■
Bachelor of Engineering (Honours) in Electrical Engineering 電機工程學（榮譽）工學士	■
Bachelor of Engineering (Honours) in Mechanical Engineering 機械工程學（榮譽）工學士	■
Bachelor of Engineering (Honours) in Product Analysis and Engineering Design 產品分析及工程設計學（榮譽）工學士	■
Bachelor of Science (Honours) in Building Engineering and Management 建築工程及管理學（榮譽）理學士	■
Bachelor of Science (Honours) in Surveying 地產及建設測量學（榮譽）理學士	■

Articulation Honours Degree Programmes/  
Preparatory Courses Leading to Overseas Awards<sup>3</sup>  
可獲頒海外大學學銜的學士學位銜接課程 / 備試課程<sup>3</sup>

Programme Title 課程	Part-time 兼讀制
Bachelor of Arts (Honours) in Business Management <sup>4</sup>	■
Bachelor of Arts (Honours) in Human Resource Management <sup>4</sup>	■
Bachelor of Arts (Honours) in Logistics and Supply Chain Management <sup>4</sup>	■
Preparatory Courses for Bachelor of Laws (LLB) <sup>5</sup>	■
Preparatory Courses for Certificate of Higher Education in Common Law <sup>5</sup>	■

Remarks:

- These programmes, offered by PolyU Schools/Departments in collaboration with SPEED, are being phased out, with no students admitted since the 2018/19 academic year.
- These programmes/courses are exempted courses under the Non-local Higher and Professional Education (Regulation) Ordinance in Hong Kong. It is a matter of discretion for individual employers to recognise any qualifications to which these programmes/courses may lead.
- Programmes offered by Northumbria University (NU)'s Newcastle Business School, the UK, in collaboration with SPEED.
- Preparatory courses offered by SPEED for the examinations of University of London (UoL), the UK.

備註：

- 理大學院 / 學系與 SPEED 合辦的課程，逐步停辦，2018/19 學年起沒有收錄新生。
- 本課程是在本港根據《非本地高等及專業教育（規管）條例》獲豁免註冊的課程，個別僱主可酌情決定是否承認本課程可令學員獲取的任何資格。
- 英國諾桑比亞大學紐卡素商學院與 SPEED 合辦的課程。
- SPEED 開辦英國倫敦大學的備試課程。



## Online Teaching and Learning 網上教與學

The prolonged pandemic had a profound effect on the teaching and learning of the College. In 2020/21, as teaching evolved from online to hybrid, lecturers also progressed from busy feeling the ropes to assiduously making improvements, especially in the all-important challenge of engaging students online. On top of making full use of MS Teams, Zoom and Moodle, lecturers branched out into a multitude of student-engaging tools and applications, such as Poll Everywhere, Mural, Google Docs, Zeetings, Kahoot!, Trello, Padlet and Socrative. After-class consultation and communication also took on new dimensions as multiple platforms or applications such as one-to-one Zoom or MS Teams meetings, Instagram posts, and WhatsApp or Signal messages were used, often beyond designated consultation hours.

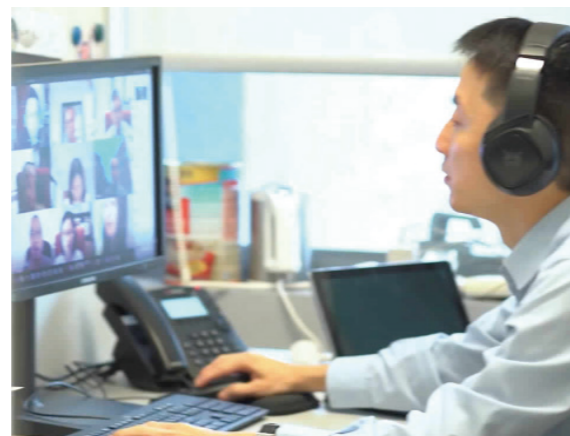
At the same time, the College spared no resources in providing teaching support, such as introducing bluetooth microphones to facilitate hybrid teaching and creating accounts for lecturers in the student domain to enable automatic dissemination of lesson videos to students. In particular, the collaboration with Microsoft Hong Kong to introduce Azure Lab Services was an Asia-Pacific first, one which enabled students to access virtual labs anytime, anywhere.

Feedback received from students on online teaching and learning was encouraging. As reflected in the Student Feedback Questionnaire (SFQ), students' level of satisfaction with the teaching of sub-degree and articulation degree programmes in 2020/21 showed a mild improvement over that of the prior year. For the newly added 2020/21 SFQ question on online learning (i.e. "There is adequate support to help me study in an online environment"), the college-wide rating was over 4.10 – on a scale of 1 (strongly disagree) to 5 (strongly agree). Moreover, in the Student Barometer exercise conducted by the independent research company "i-graduate" for 36 universities/institutions in 12 countries in 2020, CPCE received a student satisfaction rate of 91.1% in the element of "online lectures", much higher than the global benchmark of 86.0% and the Asian benchmark of 87.7%.

曠日持久的疫情對學院的教與學影響深遠。於 2020/21 學年，隨著教學從網上發展至混合模式，講師亦從最初忙於掌握如何進行網上授課，逐漸進展至力求提升教學質素，特別是在如何令學生投入網上學習這個重要環節上。為此，講師除了充分利用 MS Teams、Zoom 和 Moodle，更引入了各式各樣的網課工具和應用程式，例如 Poll Everywhere、Mural、Google Docs、Zeetings、Kahoot!、Trello、Padlet 和 Socrative。課後諮詢及交流亦有新面貌，講師運用不同的平台和應用程式，例如 Zoom 或 MS Teams 的一對一會談，甚至在指定時間以外，透過 Instagram 貼文，以及 WhatsApp 或 Signal 訊息，為同學提供諮詢。

同時，學院在支援教學方面不遺餘力，例如引入藍芽話筒，促進混合式教學。此外，也為講師在學生網域上開設戶口，以便課堂的錄影片段能夠自動傳送給學生。學院亦與微軟香港合作，於亞太區率先推出 Azure Lab Services 雲端電腦實驗室服務，讓學生可以隨時隨地使用虛擬實驗室。

學生對網上教與學的意見令人鼓舞。2020/21 學年的學生意見問卷調查結果顯示，與上一學年比較，學生對於副學位課程及學士學位銜接課程教學的滿意度稍為上升。至於 2020/21 學年新增的一條問題：「提供足夠支援，助我在網上環境中學習」，學院的整體得分逾 4.10（使用 5 分制：1 為極不同意，5 為極為同意）。此外，獨立研究機構 i-graduate 進行的 2020 年度學生指標調查，收集了來自 12 個國家合共 36 間大學和院校的學生意見，CPCE 於「網上課堂」這項指標的學生滿意度達 91.1%，遠高於國際基準的 86.0% 及亞洲基準的 87.7%。



## Continuing Education Courses 持續進修課程

2020/21 marked the second year of operation of the Continuing Education Office (CEO) under SPEED. The CEO's mission is to offer quality academic programmes and professional services to the public and private sectors, and provide professional development opportunities to experienced learners in Hong Kong and its neighbouring regions.

With the continuous support from the four academic divisions of CPCE, the CEO achieved significant growth in 2020/21 and developed more than a dozen short courses and academic programmes leading to recognised qualifications at Levels 4 to 6 under the Qualifications Framework (QF).

The CEO served more than 1,200 part-time students in 2020/21, offering a wide range of programmes and corporate training in Accounting and Insurance, Chinese Medicine, Design Thinking, Digital Marketing, Fintech, Healthcare Services, Professional Communications and Property Management.

To strengthen our collaborations with PolyU proper, the CEO developed and launched two highly specialised QF Level 6 courses, namely Professional Certificate in Primary Healthcare for Occupational Therapy and Professional Certificate in Primary Healthcare in Community Care Context for Physiotherapy, for registered occupational therapists and registered physiotherapists in Hong Kong respectively. The Food and Health Bureau of the HKSAR government has provided sponsorship to the course participants – as a way to recognise the significance of these two courses to the development of primary healthcare services in Hong Kong.

The CEO achieved a number of firsts in 2020/21. As an appointed provider of the Certificate in Property Management for Provisional Property Management Practitioner (Tiers 1&2) Licence, the CEO was ranked number one in Hong Kong in terms of student admissions, boasting over 15 public and corporate courses. In collaboration with AXA, the CEO developed a series of training workshops for their wealth management and insurance professionals in healthcare management and informatics, which was also the first of its kind in Hong Kong.

With funding support from the Hong Kong Jockey Club Disaster Preparedness and Response Institute, the CEO would be developing Hong Kong's first ever QF recognised course in Hong Kong in Emergency and Disaster Management.

Meanwhile, the CEO established partnerships with professional bodies such as Hong Kong Public Relations Professionals' Association, The Institute of Purchasing & Supply of Hong Kong, the Chartered Insurance Institute and DesignThinkers Academy to offer workshops and courses to industry practitioners and professionals.

2020/21 年度是 SPEED 持續教育處營運的第二年。持續教育處的使命不僅是為公私型機構提供優質的學術課程及專業服務，也為香港及其周邊地區具經驗的學習者提供專業發展的機會。

在 CPCE 四個學部的持續支持下，持續教育處於 2020/21 年度取得豐厚成果，包括開辦多個短期課程及資歷架構第 4 至 6 級的認可學術課程。

於 2020/21 年度，持續教育處提供涵蓋會計和保險、中藥、設計思維、數碼營銷、金融科技、醫療保健服務、專業傳播和物業管理範疇的課程和企業培訓，兼讀制學生人數逾 1,200 名。

為加強與理大本部的合作，持續教育處發展及推出兩個資歷架構第 6 級的高階專科課程：基層醫療職業治療專業證書和社區及基層醫療物理治療專業證書，對象分別為香港註冊職業治療師和註冊物理治療師。香港特區政府食物及衛生局更為課程參與者提供資助，以表揚這兩項課程對支持香港基層醫療服務發展的重要性。

持續教育處在 2020/21 年度取得多項「第一」的成就。作為物業管理業監管局指明課程（第 1 級及第 2 級）的承辦院校，持續教育處在學生入學人數方面於承辦院校當中排名第一，合共開設逾 15 個班別予公眾和企業。此外，持續教育處與 AXA 安盛合作，為其理財顧問和保險專業人員提供一系列醫療保健管理和醫療數據分析的培訓課程，這類培訓屬香港首創。

持續教育處獲香港賽馬會災難防護應變教研中心撥款支持，將開辦香港首個獲資歷架構認可的危急及災難管理高等證書課程。

同時，持續教育處與香港公共關係專業人員協會、香港物資採購與供銷學會、英國特許保險學院和 DesignThinkers Academy 等專業機構建立合作夥伴關係，將為行業從業員和專業人士開辦工作坊和課程。

Also operating under the umbrella of SPEED, the Centre for Professional and Business English (CPBE) focuses on enabling professionals to communicate more effectively in English in professional and business environments.

The core business of the CPBE lies in delivering language and communication skills training to the HKSAR government and major public organisations and corporations such as the MTR. It focuses primarily on helping otherwise proficient English users write professional documents with greater clarity.

The CPBE also organises regular recruitment screening tests for several departments of the HKSAR government and provides English proofreading and editing services for CPCE academic staff.

Looking ahead to 2021/22, the CEO will continue to develop new academic programmes, explore and establish new partnerships across industries including but not limited to Artificial Intelligence and Fintech, Engineering and Surveying, Healthcare and Allied Health Services, and Language and Communication.

此外，同樣隸屬於 SPEED 的專業及商業英語中心則致力幫助專業人士在專業及商業環境下，更有效地運用英語溝通。

專業及商業英語中心的核心工作是為香港特區政府和具規模的公營機構及企業（例如港鐵）提供英語和溝通技能培訓，並特別著重幫助已具有一定英語水平的人士進一步提升撰寫專業文案的能力。

專業及商業英語中心亦為香港特區政府多個部門籌辦招聘篩選測試，並為 CPCE 的教學人員提供英語校對和編輯服務。

展望 2021/22 年，持續教育處將繼續發展新的學術課程，與不同行業的機構發展夥伴關係，包括人工智能與金融科技、工程與測量、醫療保健和專職醫療服務，以及語文及傳意等。



## Service-Learning 服務學習

With the support of the PolyU Service-Learning and Leadership Office, two more new Service-Learning (SL) subjects, namely “Storytelling for Understanding: Refugee Children in Hong Kong” and “Chinese as a Second Language for Ethnic Minority Children”, were developed and approved by the PolyU Senate in June 2021, thereby bringing the total number of SL subjects to six.

In 2020/21, 40 students enrolled on the SL subject “Practices in Health Promotion” offered in collaboration with Sik Sik Yuen. Assisting in organising activities and directly interacting with service recipients, the students were able to apply what they had learned and to understand the daily operation of social welfare organisations.

SL is an experiential learning approach that integrates academic study with community service and self-reflection to enrich students’ learning experiences while at the same time contributing to the community. Since the introduction of the first SL subject in 2016/17, SPEED students of full-time articulation honours degree programmes can choose to take a 3-credit SL subject or a free elective as a part of the graduation requirement.

在理大服務學習及領導才能發展處的支持下，兩個新的服務學習科目 Storytelling for Understanding: Refugee Children in Hong Kong 及 Chinese as a Second Language for Ethnic Minority Children 亦已於 2021 年 6 月獲理大教務委員會批核，令服務學習科目總數增至六科。

於 2020/21 學年，40 位學生修讀 Practices in Health Promotion 這個由 SPEED 與耆色園合作的服務學習科目。他們協助籌辦活動，更與服務對象直接交流，實踐所學之餘，也從中了解社福機構的日常運作。

服務學習是一項體驗式學習法，把社會服務與自我反思融入學習之中，藉此豐富學生的學習經歷，同時造福社區。自 2016/17 學年推出首個服務學習科目後，SPEED 全日制榮譽學士學位銜接課程的學生，可以選擇修讀 3 個學分的服務學習科目或其他選修科代替服務學習科目，從而符合畢業條件之中選修科的要求。



Interaction brings joy to both the elderly and students of Service-Learning.  
長者和參與服務學習的學生互動，彼此樂在其中。

# Pedagogical Innovation Fund

## 創新教學基金

Launched by the College Learning and Teaching Committee (CLTC) of CPCE in 2019/20, the Pedagogical Innovation Fund (PIF) promotes e-learning and encourages academic staff to pioneer innovative ideas.

In 2020/21, based on the criteria of student engagement, innovation, feasibility and adaptability/transferability, the CLTC carried out a rigorous selection exercise of the proposals submitted by academic staff and approved the following:

- Development of Online Experiential Learning Medium for Sustainability and Built Environment Education
- Enhancing Experimental Learning in Tourism and Hospitality Education: The Development of an Online 3D Virtual Tour-Guiding Platform
- Teaching and Learning Groupwork Concepts and Skills with Simulated Scenarios

CPCE 學院教學委員會於 2019/20 年度成立創新教學基金，旨在推廣電子化學習，並鼓勵教員開拓不同的創新意念。

2020/21 年度，學院教學委員會以學生可參與程度、創新性、可行性，以及適應性 / 可轉移性等準則嚴格篩選教員提交的創新教學基金計劃書，批核了三個項目：

- 為可持續及建設環境教育開發網上體驗式學習媒介
- 加強旅遊和款待業教育的實驗式學習：開發網上三維虛擬導遊平台
- 在模擬情境下教授及學習小組工作概念及技巧



# Student Barometer 2020

## 2020年學生指標調查

CPCE participated in the Student Barometer (SB) exercise for the sixth year in a row, and its performance was on par with the global and Asian benchmarks in various aspects of students' experience.

The SB exercise, conducted by the independent research company "i-graduate", is a global survey<sup>1</sup> of students' experience in the areas of arrival, learning, living and support. In 2020, CPCE received an overall local student satisfaction rate<sup>2</sup> of 83.6%, which was gauged by "i-graduate" as "high" and comparable with the global and Asian benchmark.

Among the local students of the participating institutions, the survey revealed that:

- In learning elements, CPCE attained a high average student satisfaction rate<sup>3</sup> of 86.1%, which was slightly higher than the global benchmark of 85.8%. Of the 37 individual learning elements, CPCE outperformed both the global and Asian benchmarks in 16 of them. Besides, CPCE attained a satisfaction rate of 90% or higher in 13 elements.
- With respect to "Careers Advisory Service", CPCE received a student satisfaction rate of 97.5%, which was much higher than the global benchmark of 91.9% and the Asian benchmark of 94.3%.

Remarks:

- 1 SB Survey 2020 received around 56,000 responses from students of 36 universities/institutions in 12 countries.
- 2 Overall student satisfaction rate refers to the percentage of respondents who indicated they were "satisfied" or "very satisfied" over the question, "Overall, how satisfied are you with all aspects of your experience at your university/institution?".
- 3 Average satisfaction rate of respondents over 37 learning elements assessed in the survey

CPCE 連續第六年參與學生指標調查，在多個有關學生學習體驗的項目中，CPCE 的表現與國際及亞洲基準相若。

學生指標調查由獨立研究機構 i-graduate 統籌和進行，旨在探討全球學生<sup>1</sup>於迎新安排、學習、校園生活及學院支援服務的體驗。於 2020 年，CPCE 的本地學生整體滿意度<sup>2</sup>達 83.6%，獲 i-graduate 評為「高」，並與國際基準和亞洲基準相若。

從參與院校本地生的調查意見反映：

- 學生對 CPCE 教學相關指標的平均滿意度<sup>3</sup>達 86.1%，稍高於國際基準的 85.8%。在 37 項教學相關指標中，CPCE 在其中 16 項的表現優於國際及亞洲基準；另外，CPCE 在其中 13 項的學生滿意度高達 90% 或以上。
- 學生對教員提供的就業諮詢服務的滿意度達 97.5%，顯著高於國際基準的 91.9% 及亞洲基準的 94.3%。

備註：

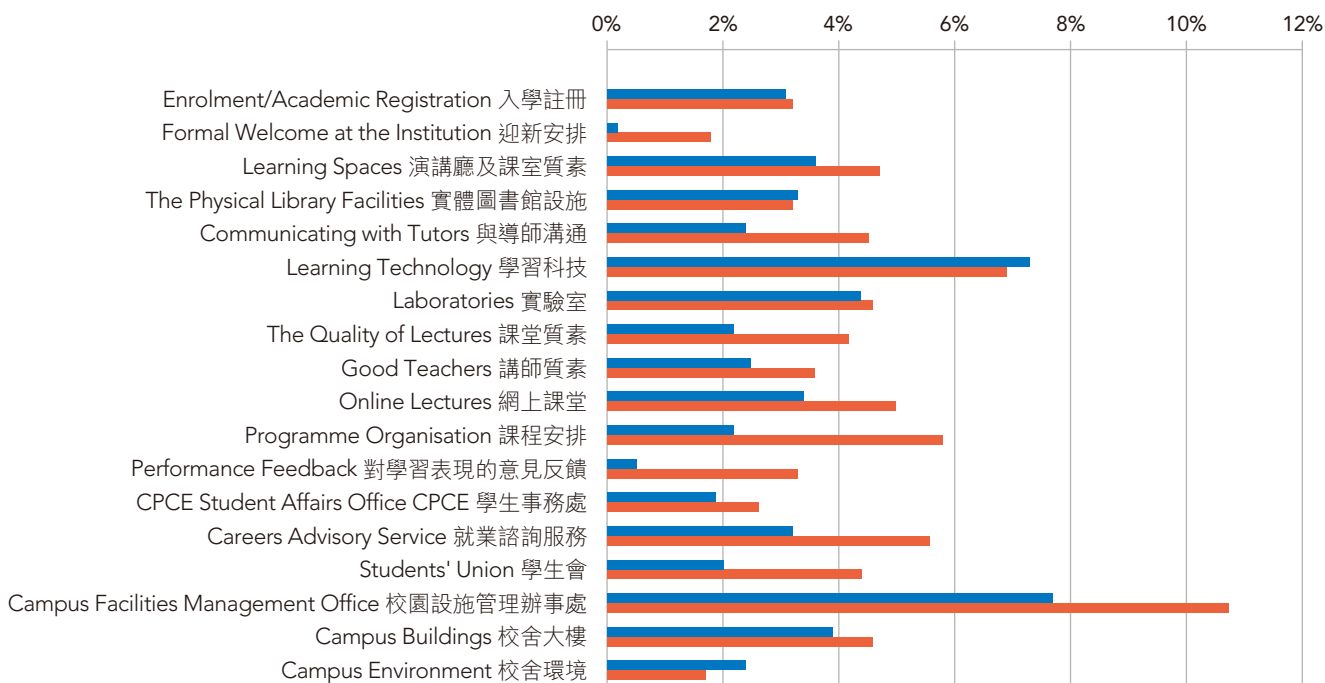
- 1 2020 年學生指標秋季調查收到來自 12 個國家 36 間大學 / 院校約 56,000 個學生回覆。
- 2 整體學生滿意度是指回覆者就「整體而言，你於就讀大學 / 院校各方面體驗的滿意度」的問題，表示「滿意」或「非常滿意」的比率。
- 3 回覆者對 37 項教學相關指標的平均滿意度



The bar graph below shows elements that CPCE performed above the global and Asian benchmarks for local students in the SB 2020:

以下圖表顯示 2020 年學生指標調查中，CPCE 在本地學生的多項指標中的表現高於國際及亞洲基準：

## Elements Where CPCE Performs Above Asian/Global Benchmarks CPCE 表現高於亞洲及國際基準的項目



■ % above Asian benchmark 高於亞洲基準的百分比  
■ % above global benchmark 高於國際基準的百分比

